

[跳至内容](#)

[eWeLink](#)



Using IP66 Waterproof Case with Sonoff Basic to Remote Control Outdoor Christmas Tree Lighting

The annual Christmas is coming soon. It's time for the inspiring geeks to start their own X-mas lighting project. Here, we want to share you with an exciting new product: IP66 Waterproof Case, which you can use to your outdoor Christmas tree lighting.

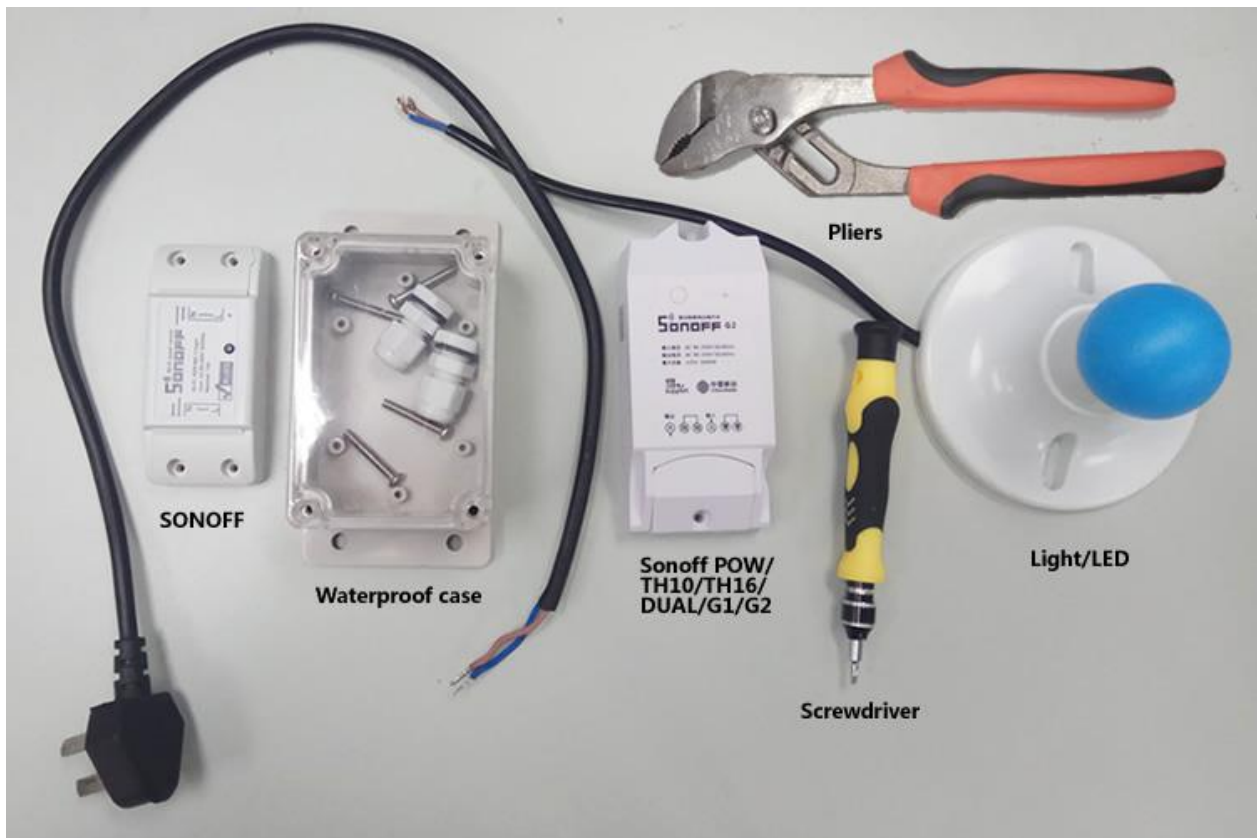


We selected the Sonoff Basic as the smart switch to remote control the Christmas tree lighting on phone. The Sonoff Basic is an inexpensive solution, it takes you just a few bucks. It's small, but with great functions, it can be controlled from anywhere at any time, really a fair good deal! The most important thing for the outdoor Christmas tree lighting project is to solve the waterproof problem. Once it snows, your Sonoff model will get wet and burnt. So selecting a good waterproof case is very important. IP66 waterproof case is just the one we need.

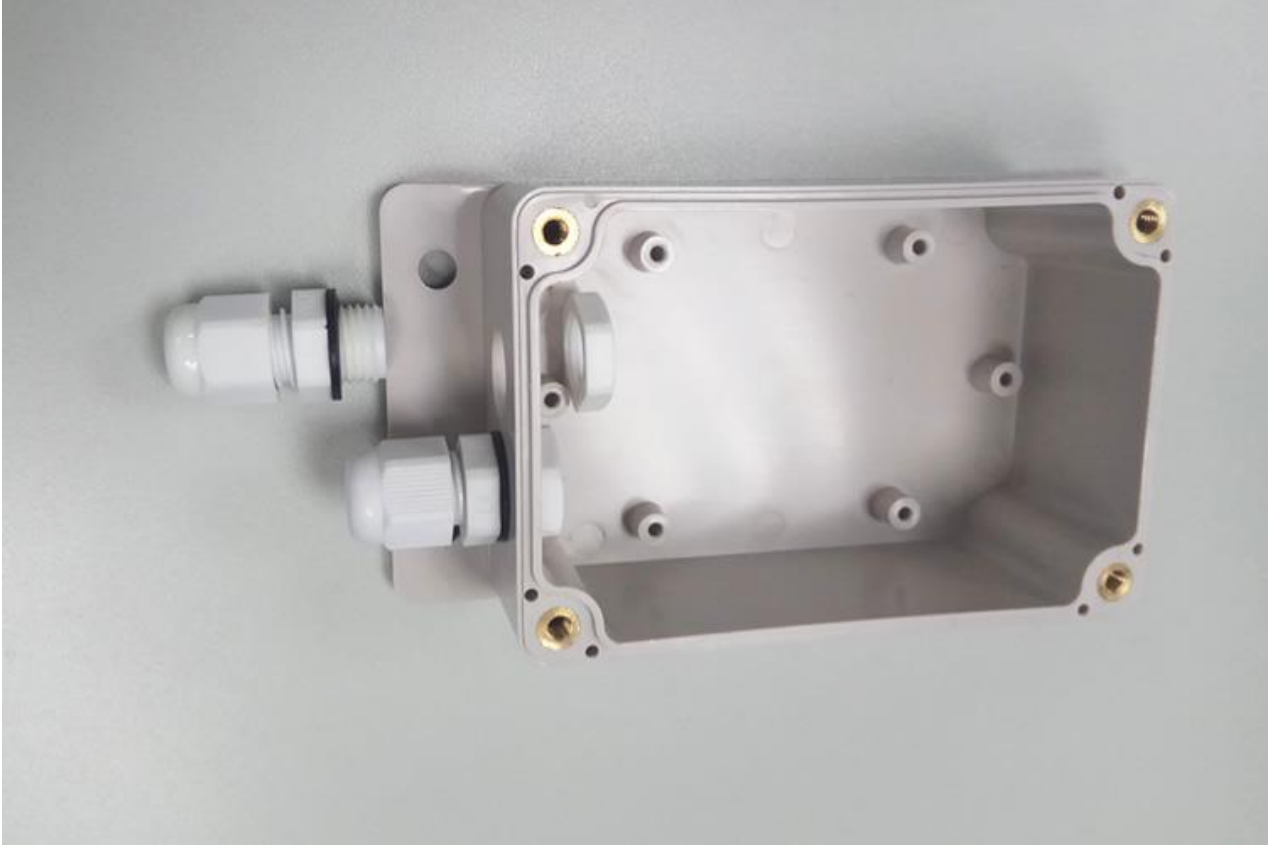
So we applied it with the Sonoff Basic to DIY the lighting. I will share the step to step tutorial to you below.

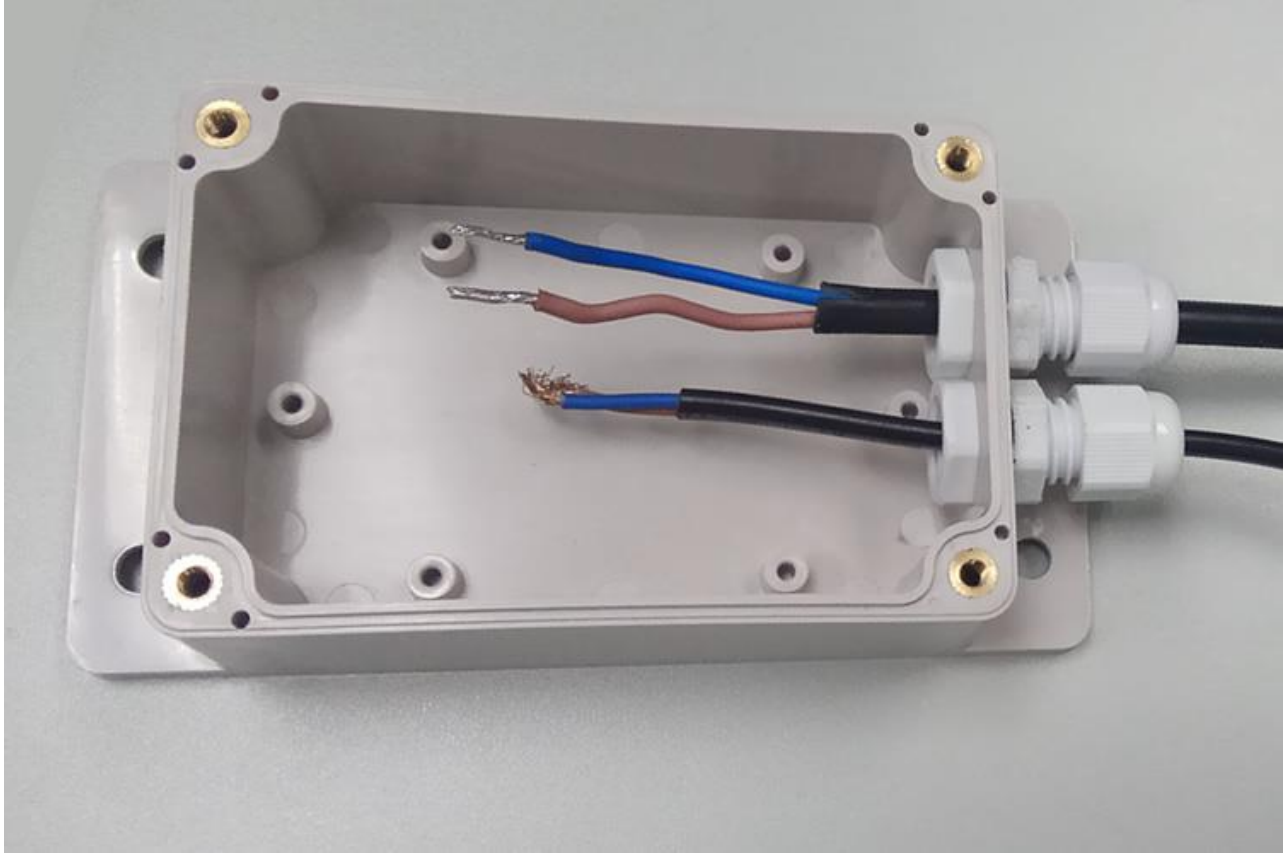


Materials and Tools:

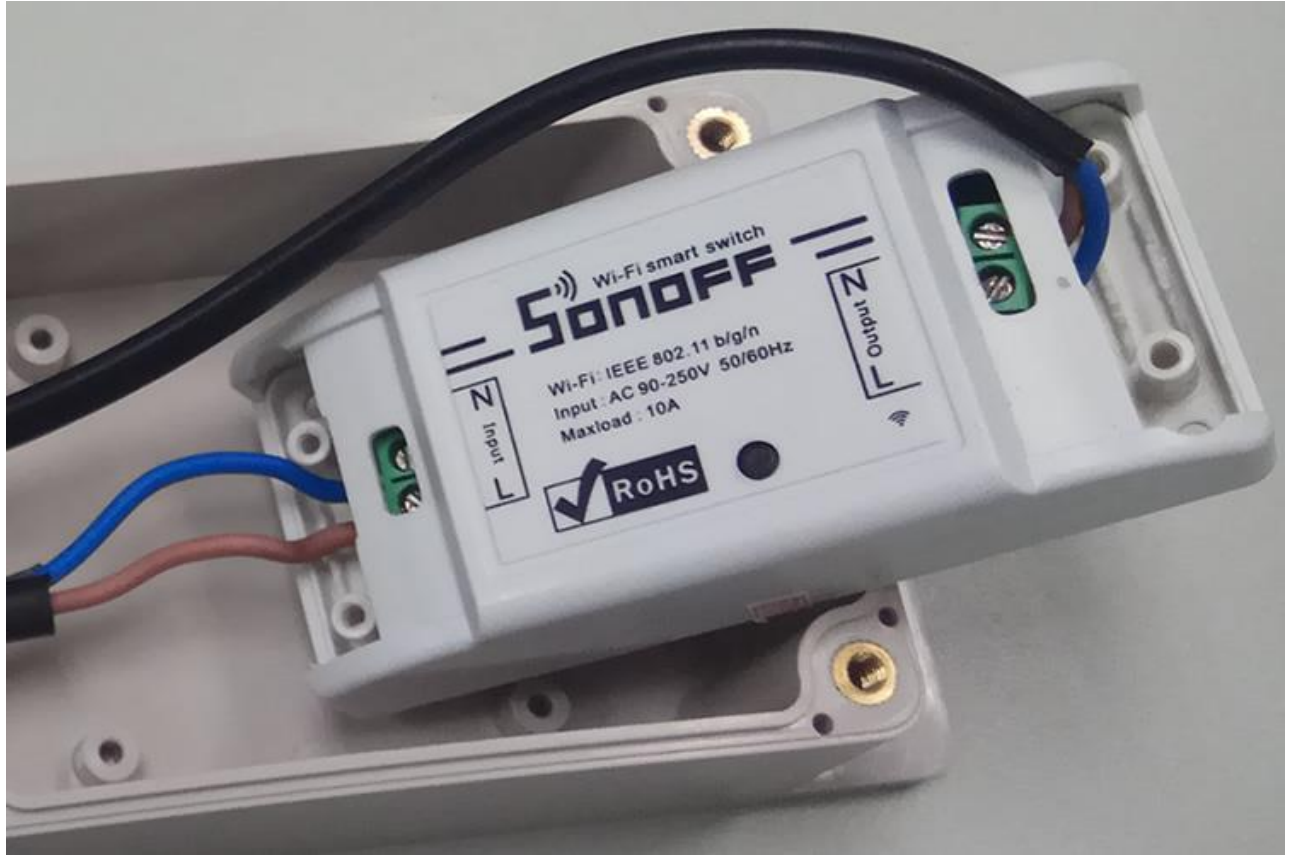


Step 1: Install the wiring nuts of the IP66 waterproof case





Step 2: Wire the Sonoff Basic accordingly. Connect it to your power supply and the Christmas tree LED strips.



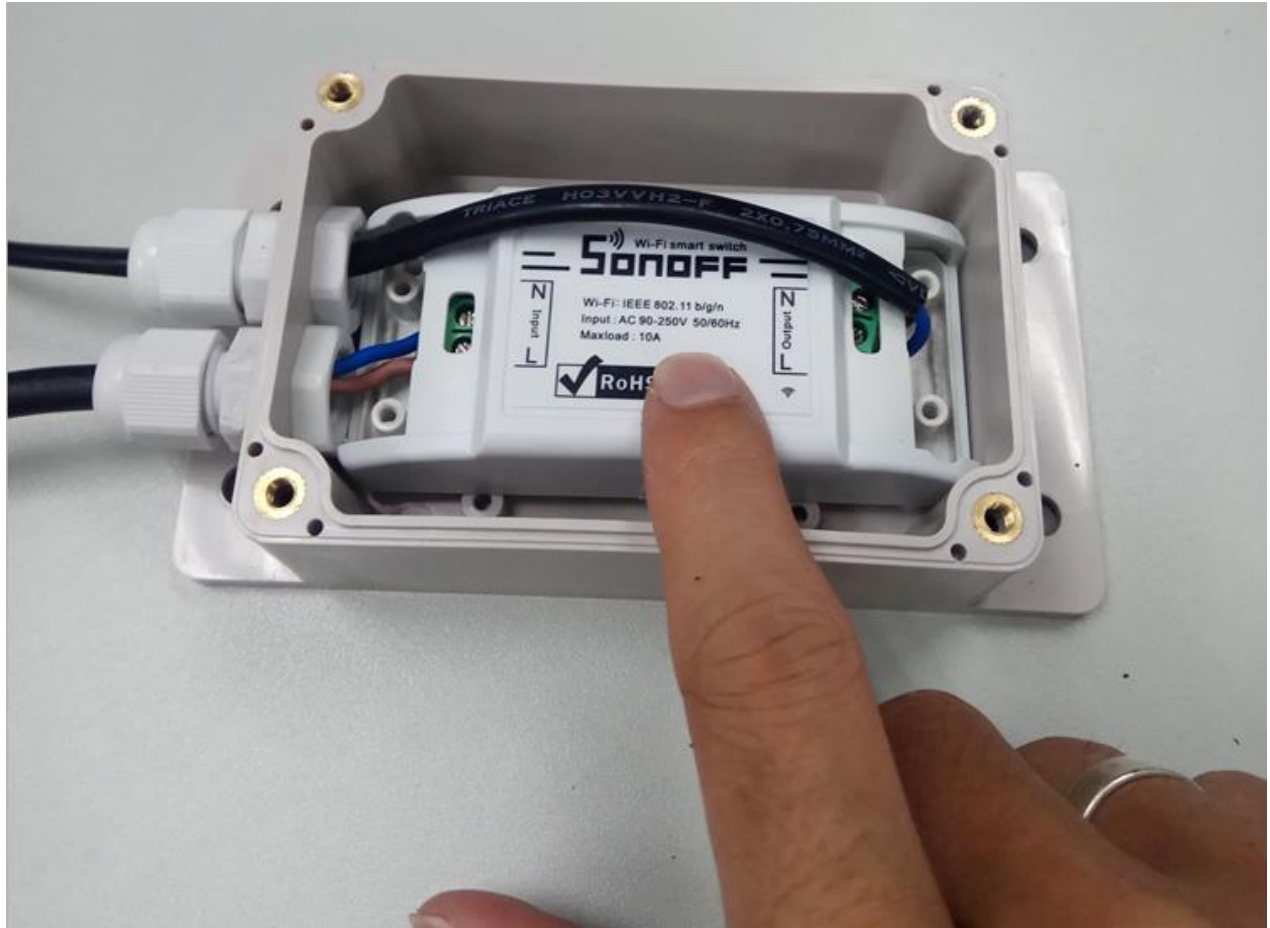


Step 3: Download the eWeLink App from App store or Google Play. Register an account if you don't have.

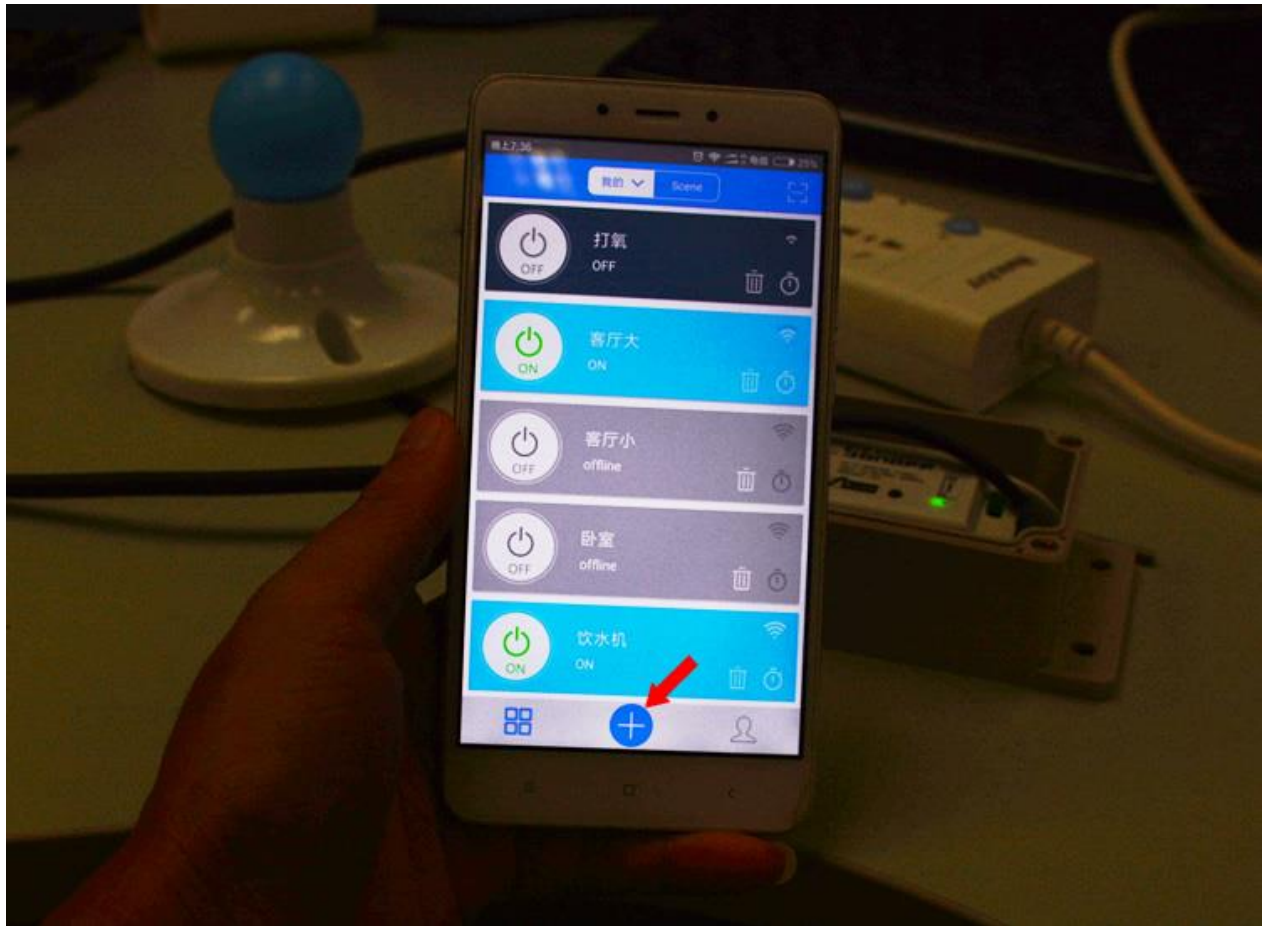
Install the APP



Add the Sonoff Basic to your eWeLink account. Press and hold the pairing button for 7s until the led indicator fast blinks, then release your finger.

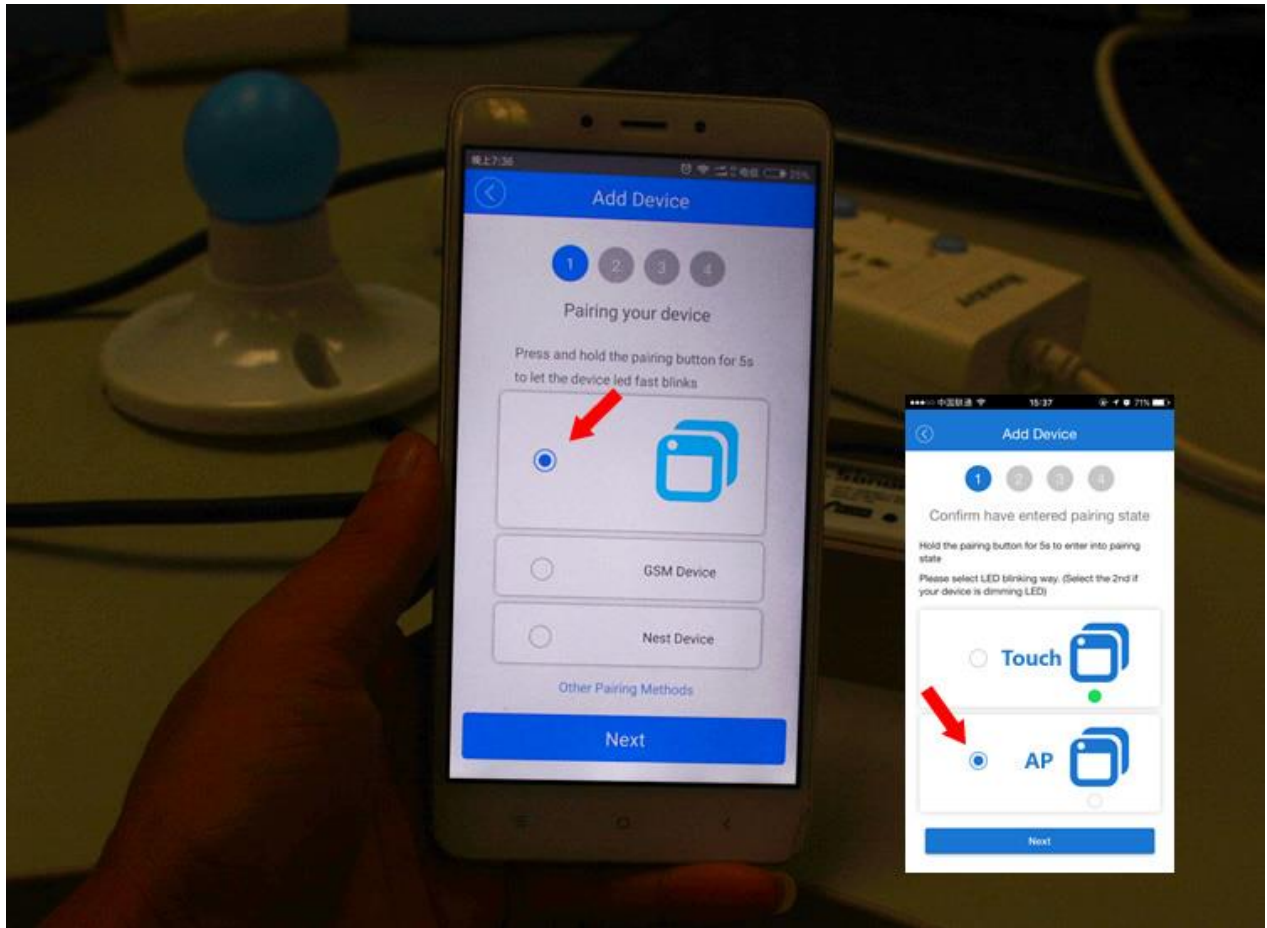


Tap “+” to add the device.

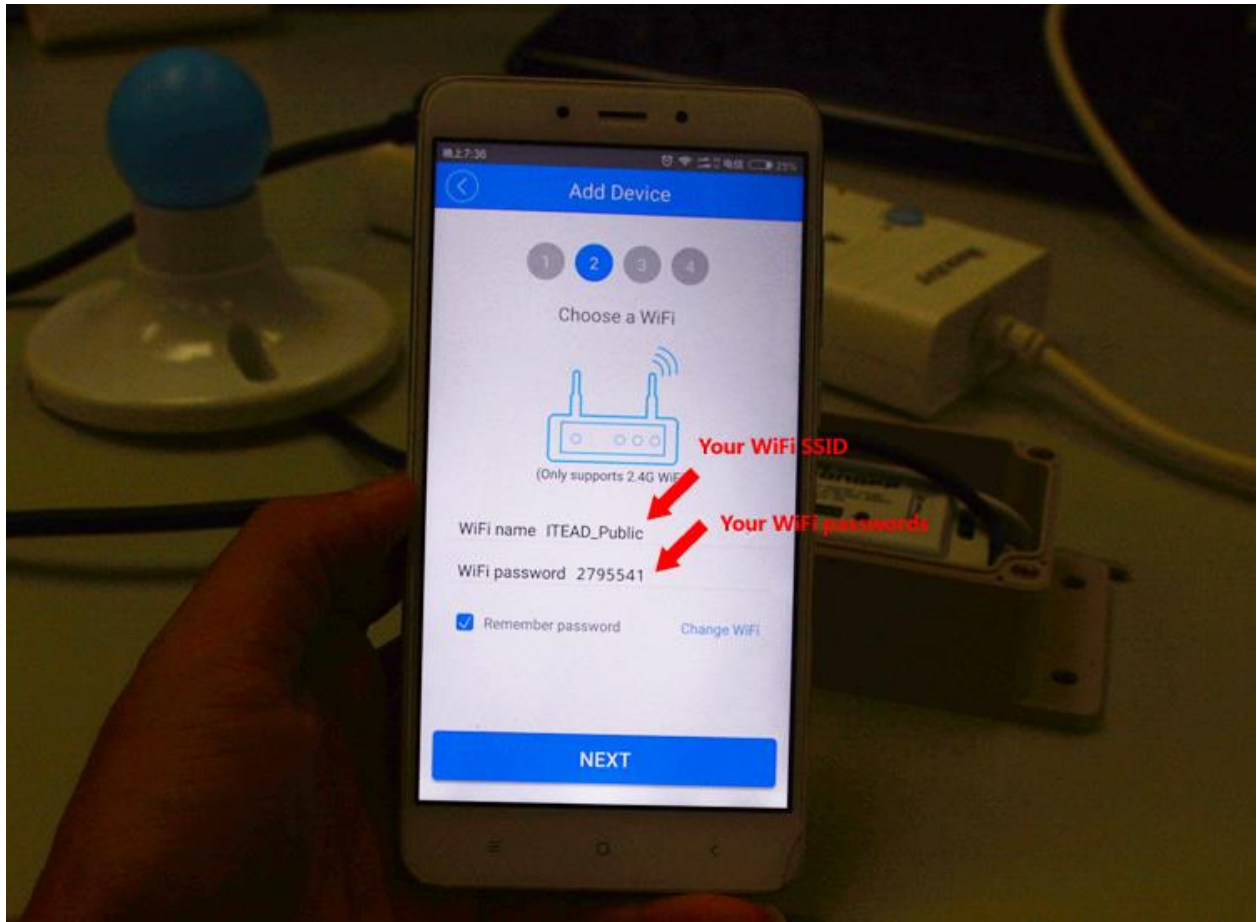


Android users should select the first pairing icon.

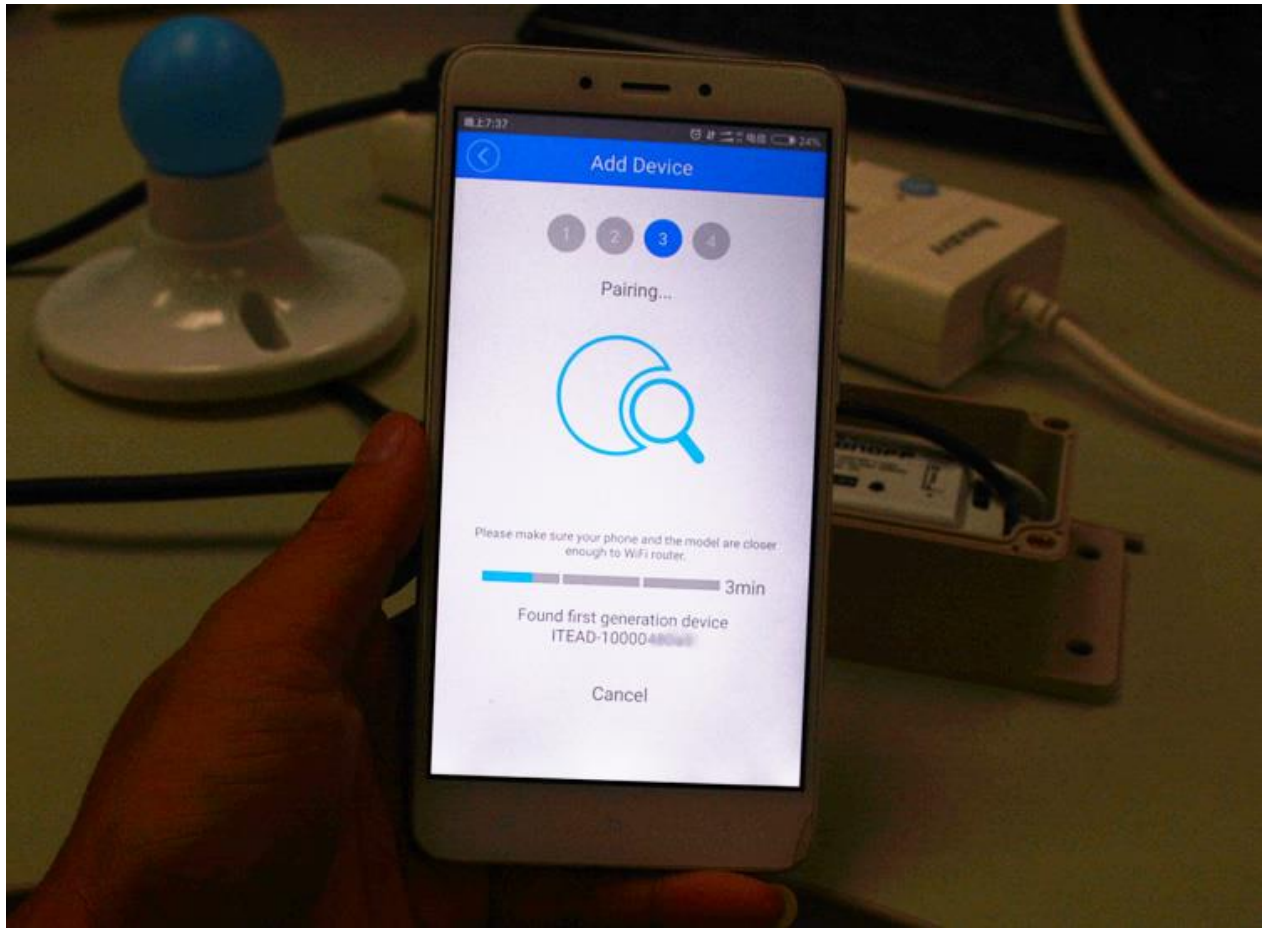
Ios users should select AP pairing icon, then go to phone Settings->Wi-Fi->Connect the WiFi starts with ITEAD-***** with the password of 12345678, then go back to eWeLink.



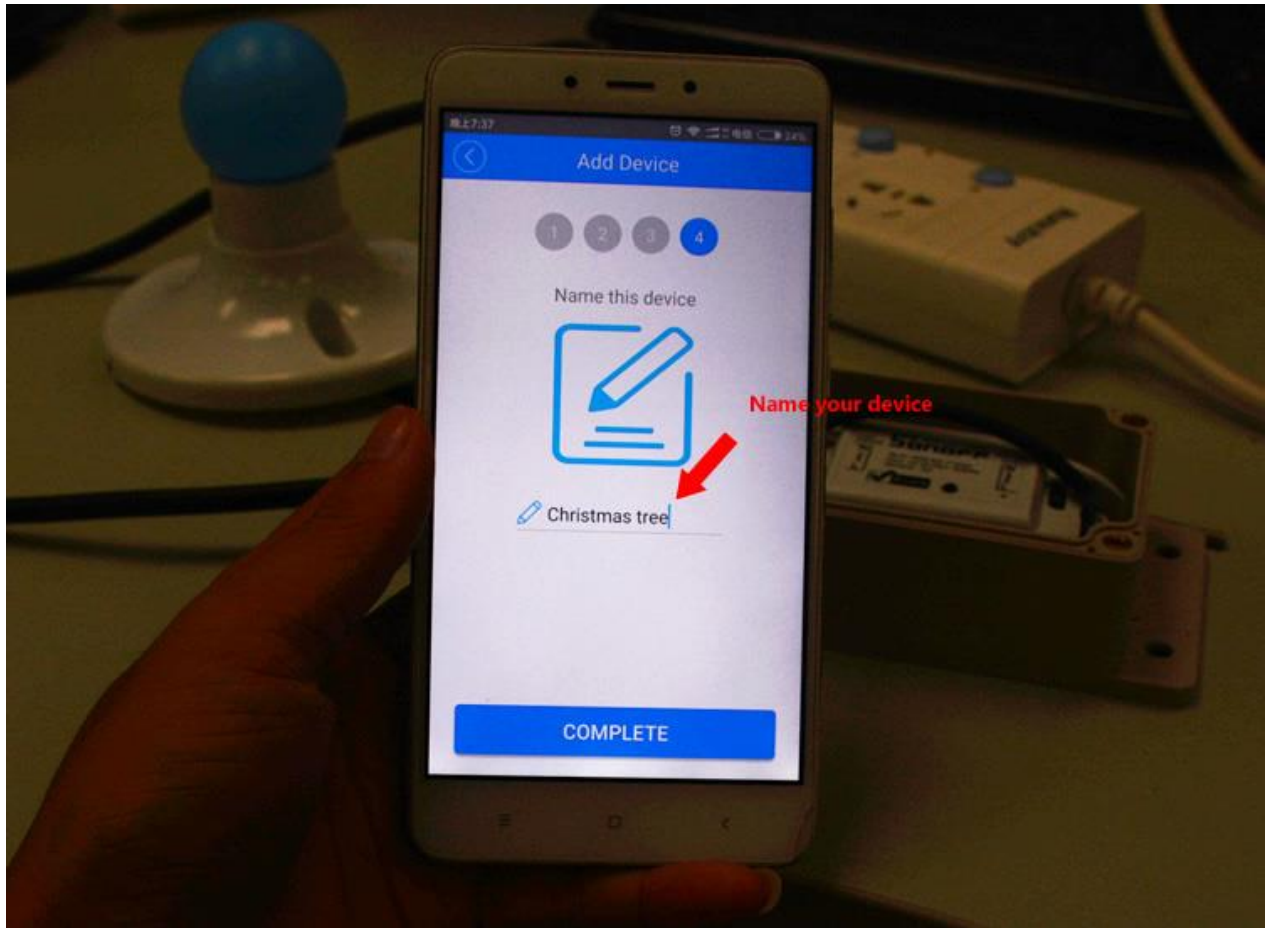
Enter the WiFi SSID and password of the WiFi network your phone connects with. Make sure your WiFi network is normal.



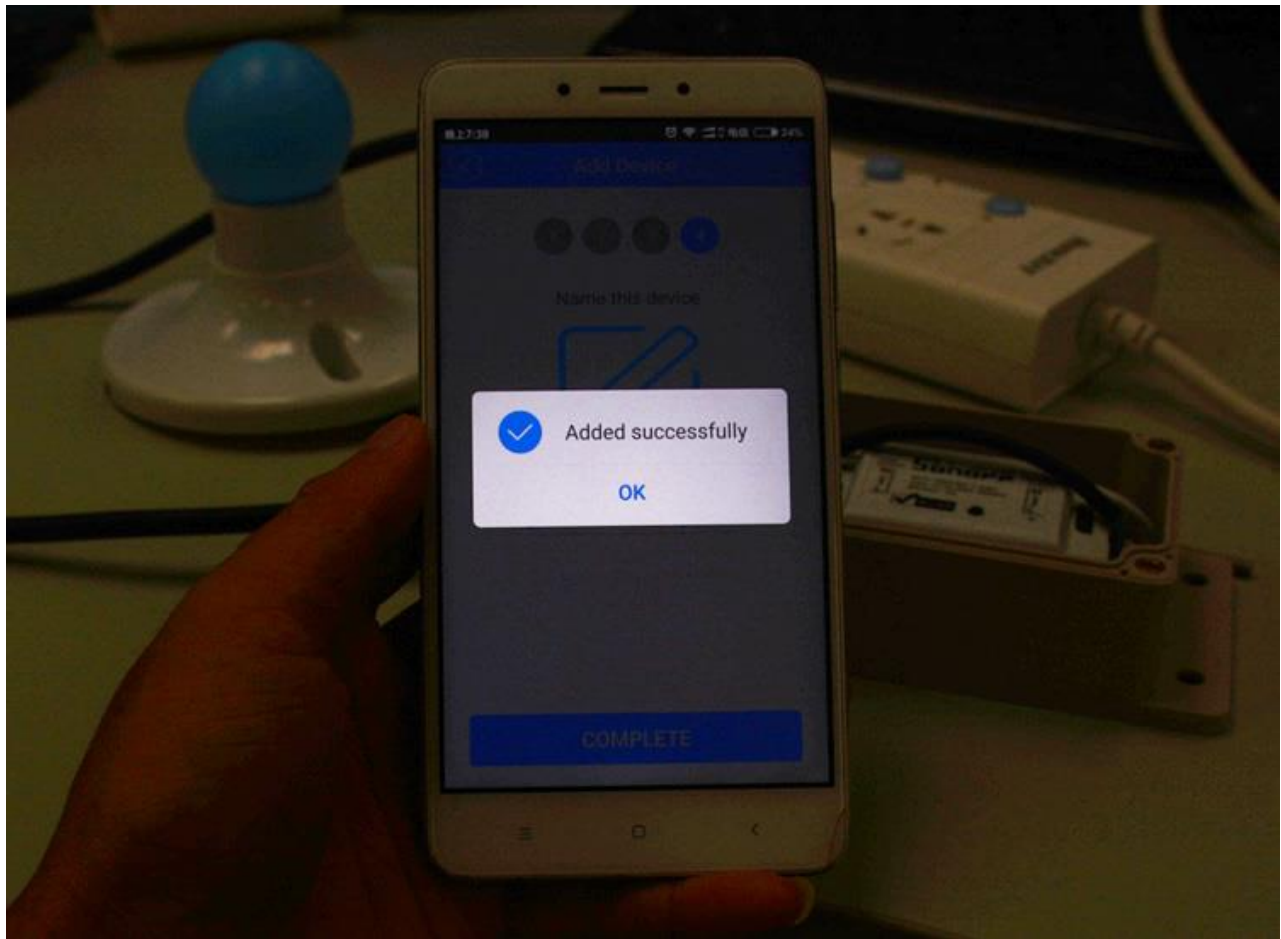
Android users can view the hotspot and auto-connect it.



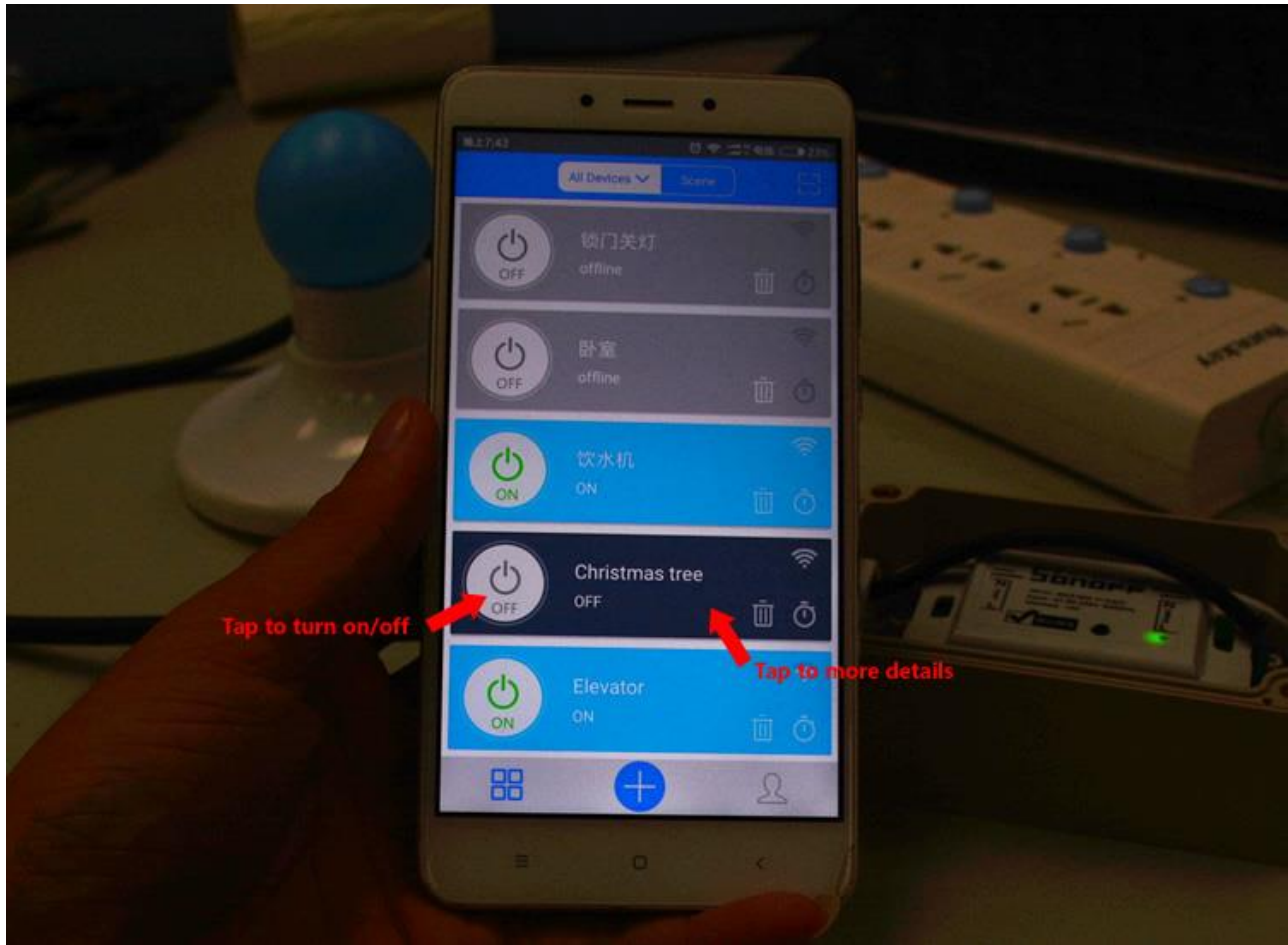
Added successfully. Name the device.



Complete adding process.



You can view the device on the list.



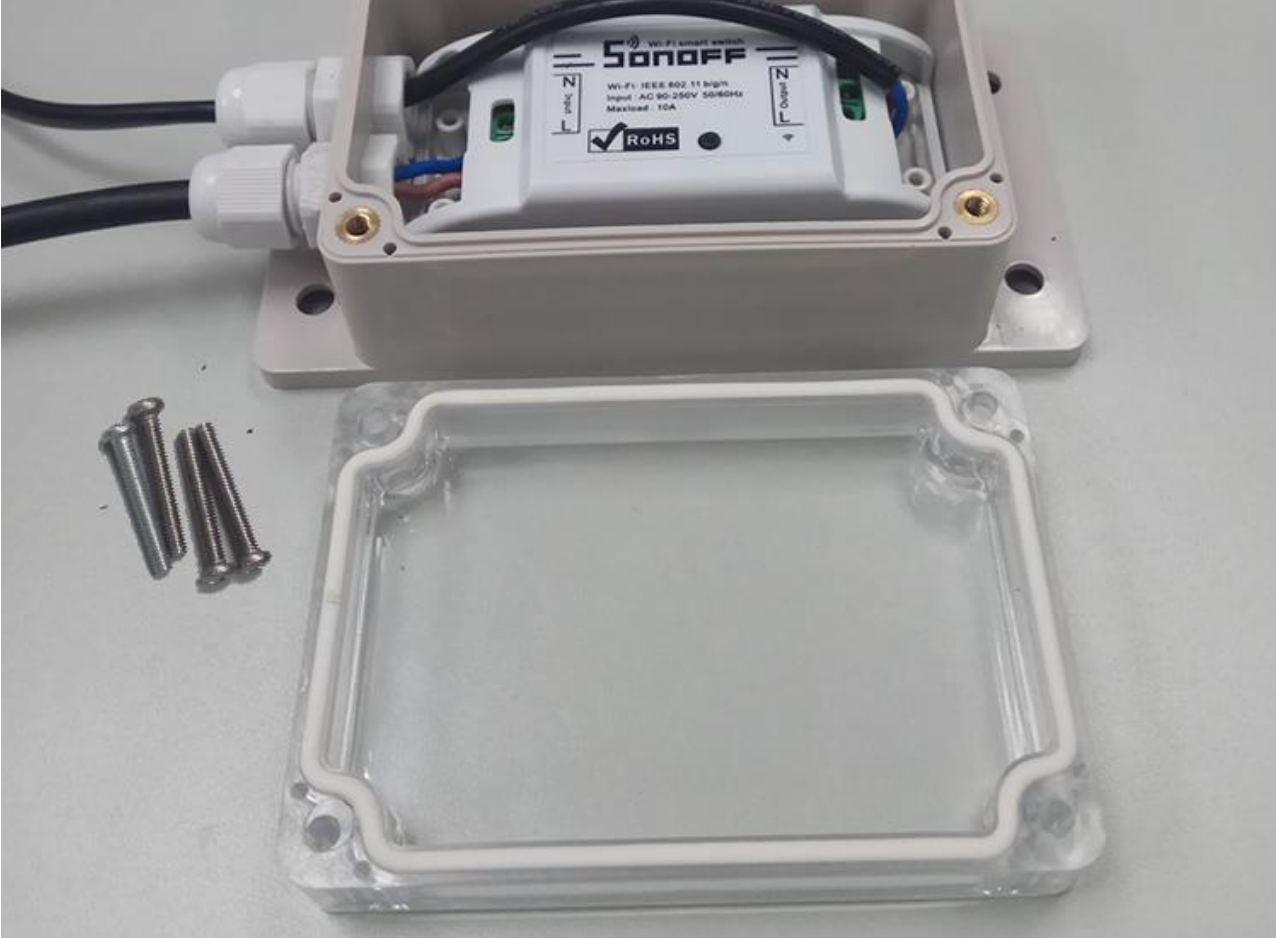
Enter its interface, you can share control it, create max.8 enabled countdown/scheduled/loop timers to make it auto-turn on/of at a specified time.

Click the Setting on the upper right corner, you can rename the device, set default power on status, enable the vibrate switch or enable the operation notification push function.



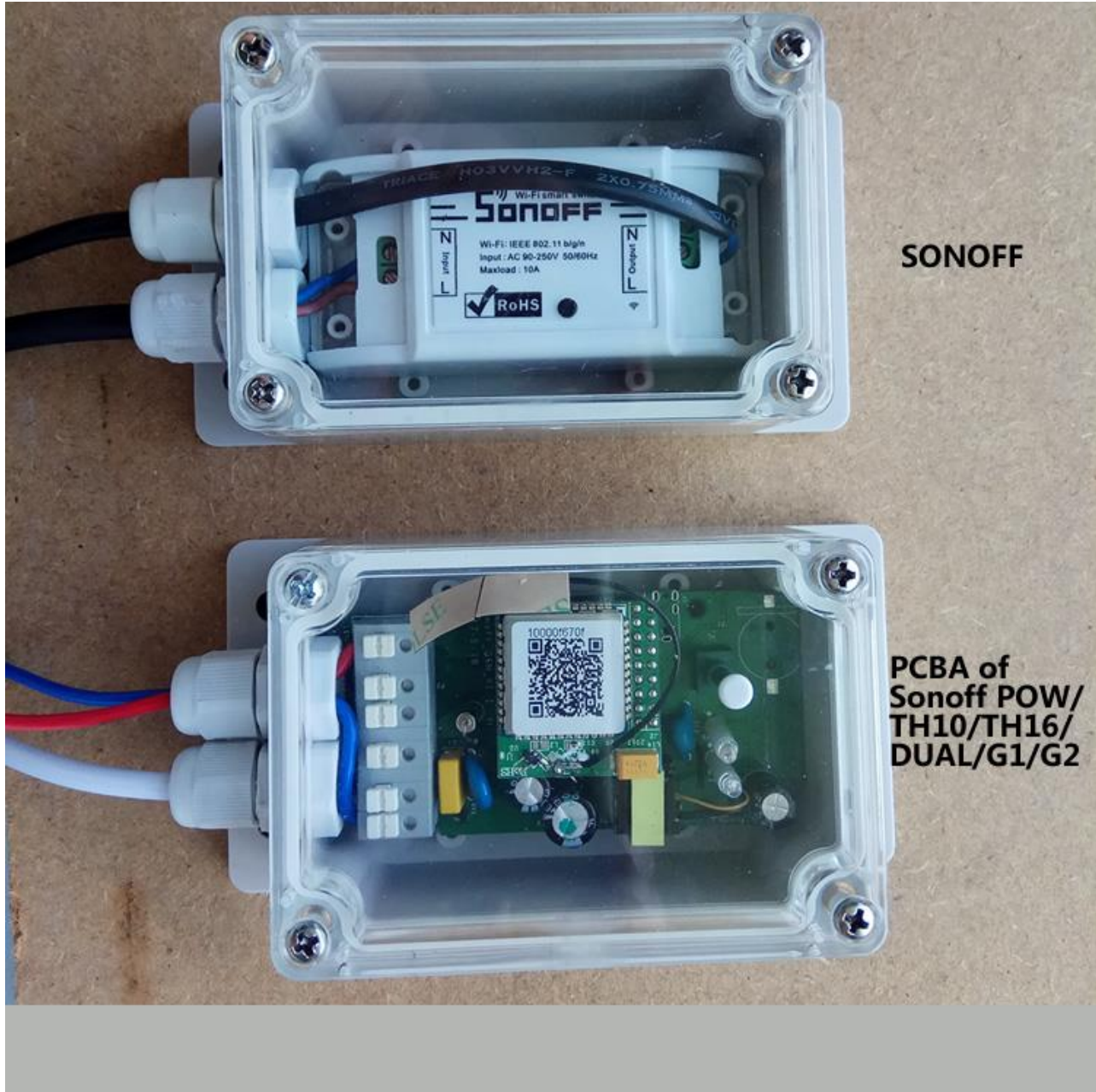


Step 4: Check if the waterproof strip on the transparent cover is completed. If everything is fine, close it to the case tightly. Drive the 4 screws to fix the cover. All done.





The IP66 waterproof case is suitable for multiple Sonoff models. Like Sonoff Basic, Sonoff RF, PCBA boards of Sonoff Pow/TH10/TH16/Dual/G1/G2.



SONOFF

**PCBA of
Sonoff POW/
TH10/TH16/
DUAL/G1/G2**

Put the connected LED strip to the Christmas tree. Our project is completed.



Wi-Fi smart switch
Sonoff

Wi-Fi: IEEE 802.11 b/g/n
Input: AC 90-250V 50/60Hz
Maxload: 10A



N
Input

Output
N

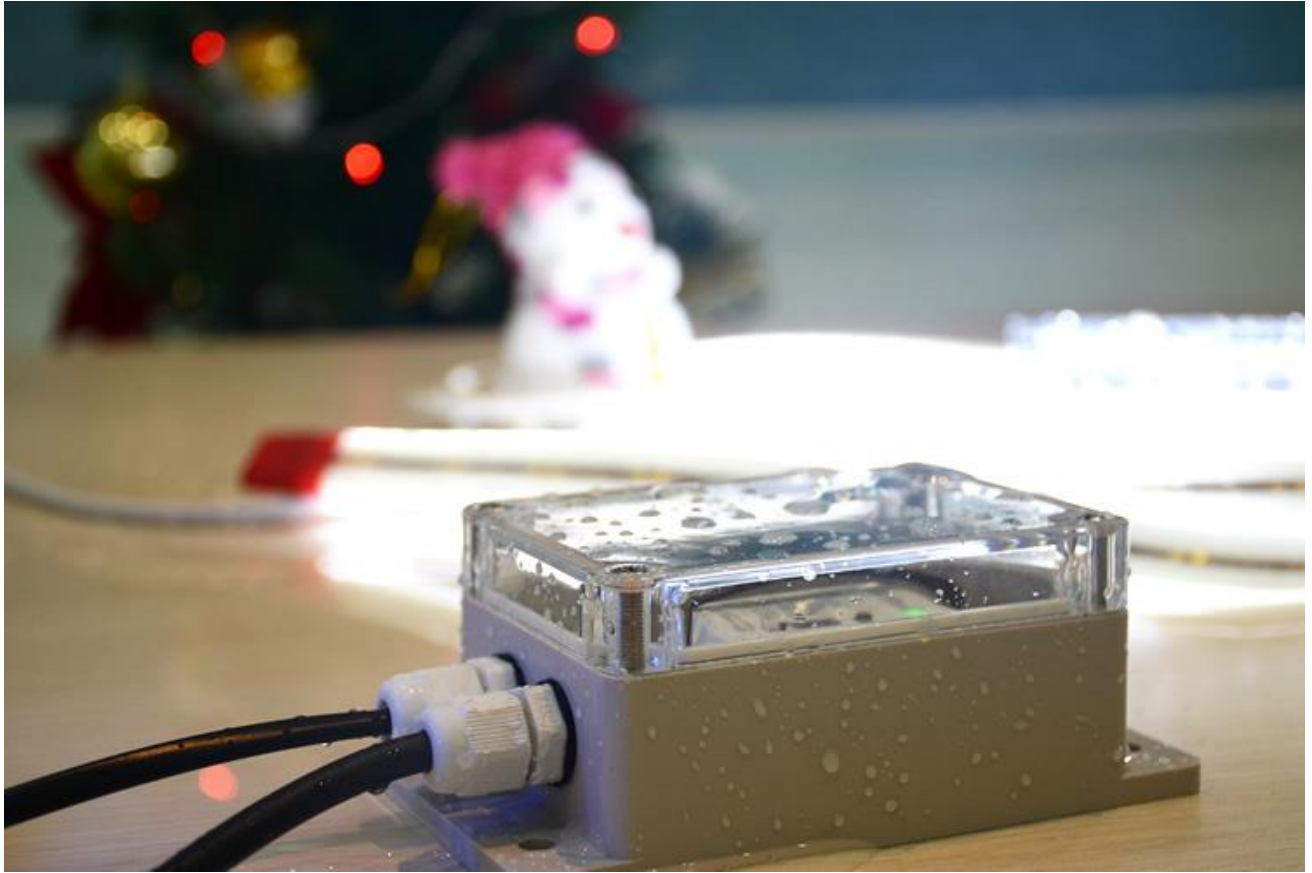


Let's test the waterproof effect.

SONOFF

IP66 WATERPROOF CASE





The Sonoff Basic can be voice controlled by Amazon Alexa and Google Assistant, below are the tutorials.

[Sonoff Works With Amazon Alexa Tutorial](#)

[Sonoff Works With Google Assistant Tutorial](#)



作者 [店长](#)发布于 [2017年9月29日](#)

文章导航

[上一篇文章：eWeLink涉及权限说明](#)

[下一篇文章：设备WiFi指示灯闪烁方式解析](#)

所有文章

- [Troubleshooting](#)
- [S31美规电量检测插座](#)
- [S31 User Guide](#)
- [IFTTT使用说明](#)
- [Sonoff T1 EU User Guide](#)
- [T1 EU操作说明](#)
- [使用天猫精灵语音控制易微联设备](#)
- [Judging Your Sonoff Status from LED Indicator](#)
- [EWelink-Português \(Brasil\)](#)
- [EWelink-Русский](#)
- [EWelink-日本語](#)
- [Sonoff Touch Wall Switch ユーザーガイド](#)
- [SONOFF Basic / RF ユーザーガイド](#)
- [S20 Smart Socketユーザーガイド](#)
- [EWelink-Español](#)
- [Sonoff Touch Wall Switch GUÍA DEL USUARIO](#)
- [SONOFF Basic / RF GUÍA DE USUARIO](#)
- [S20 Smart Socket GUÍA DEL USUARIO](#)
- [EWelink-Italiano](#)
- [Sonoff Touch Wall Switch GUIDA UTENTE](#)
- [SONOFF Basic / RF GUIDA PER L'UTENTE](#)
- [S20 Smart Socket GUIDA UTENTE](#)
- [EWelink-Français](#)
- [Sonoff Touch Wall Switch GUIDE DE L'UTILISATEUR](#)
- [SONOFF Basic / RF GUIDE DE L'UTILISATEUR](#)
- [S20 Smart Socket GUIDE DE L'UTILISATEUR](#)
- [EWelink-Deutsch](#)
- [Sonoff Touch Wandschalter BENUTZERHANDBUCH](#)
- [S20 Smart Socket BENUTZERHANDBUCH](#)
- [SONOFF Basic / RF BENUTZERHANDBUCH](#)
- [设备WiFi指示灯闪烁方式解析](#)
- [Using IP66 Waterproof Case with Sonoff Basic to Remote Control Outdoor Christmas Tree Lighting](#)
- [eWeLink涉及权限说明](#)
- [S30插座使用说明](#)
- [S30 Smart Socket User Guide](#)
- [Sonoff 433 RF Bridge User Guide](#)
- [WiFi转射频遥控网关使用说明](#)
- [Sonoff B1调光调色灯泡](#)
- [Sonoff B1 User Guide](#)
- [Sonoff T1 UK操作说明](#)
- [Sonoff T1 UK User Guide](#)
- [Sonoff G1使用说明书](#)
- [Sonoff 4CH Pro使用说明书](#)

- [Sonoff 4CH Pro User Guide](#)
- [Sonoff G2使用说明书](#)
- [Sonoff G1 User Guide](#)
- [Sonoff Pow智能电量统计开关](#)
- [Sonoff Dual双路智能改装件](#)
- [S22 User Manual](#)
- [BN-SZ01智能吸顶灯](#)
- [Sonoff 4CH多通道智能开关使用说明](#)
- [BN-SZ01 Ceiling LED](#)
- [Sonoff 4CH User Guide](#)
- [Sonoff Hum](#)
- [智能加湿器](#)
- [Sonoff SC User Guide](#)
- [Sonoff Dimming LED](#)
- [Sonoff Pow User Guide](#)
- [智能触摸墙壁开关使用说明](#)
- [IFAN智能风扇使用说明](#)
- [SONOFF SV](#)
- [SONOFF TH10/ TH16](#)
- [SONOFF DUAL USER GUIDE](#)
- [S21 TH SMART SOCKET](#)
- [INCHING/SELF-LOCKING Switch](#)
- [TOWER SOCKET USER GUIDE](#)
- [IFAN USER GUIDE](#)
- [Sonoff Touch Wall Switch](#)
- [S85 WALL SOCKET USER GUIDE](#)
- [SLAMPHER RF USER GUIDE](#)
- [S20 Smart Socket USER GUIDE](#)
- [SONOFF Basic/RF USER GUIDE](#)
- [温湿度改装件](#)
- [直流电路改装件](#)
- [单路点动改装件](#)
- [S21温湿度智能插座](#)
- [智能立式插座使用说明](#)
- [S85墙壁插座使用说明](#)
- [智控调光调色灯使用说明](#)
- [SLAMPHER智能灯座使用说明](#)
- [S20智能插座使用说明](#)
- [SONOFF改装件使用说明](#)
- [通用操作使用说明](#)
- [eWeLink User Guide \(English\)](#)
- [易微联智能家居产品使用说明书（中文版）](#)

[eWelink 自豪地采用WordPress](#)