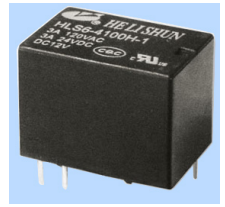


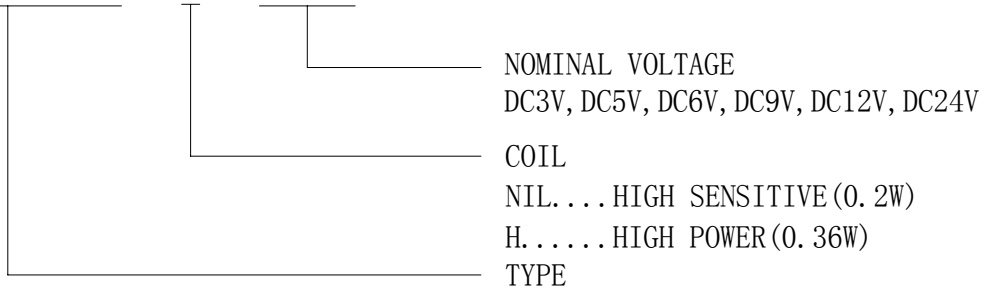


CQC04001010236



## ORDERING CODE

HLS6-4100H-1 - H - DC12V



## CONTACT DATA

Contact Form	1A/1C
Contact Material	Au+Ag Alloy
Contact Ratings	3A:120VAC/24VDC
Max Switching Voltage	240VAC/60VDC
Max Switching Current	3A
Max Switching Power	240VA/90W
Initial Contact Resistance	50m $\Omega$ Max at 6VDC 1A
Life Expectancy Electrical	100,000 Operations(rated load)
Life Expectancy Mechanical	10,000,000 Operations(no load)

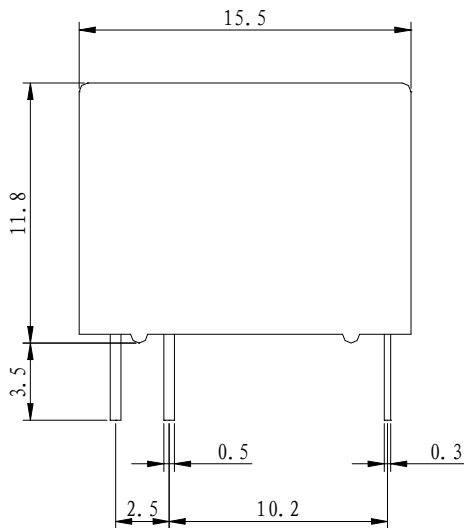
## GENERAL DATA

Insulation Resistance	100M $\Omega$ Min at 500VDC	
Dielectric Strength Between Open Contacts	500VAC 50-60HZ (1 minute)	
Dielectric Strength Between Contacts And Coil	1000VAC 50-60HZ (1 minute)	
Operate Time	5ms max	
Release Time	5ms max	
Ambient Temperature	-25 $^{\circ}$ C to +70 $^{\circ}$ C	
Shock Resistance	Malfunction	10G
	Destruction	10G
Vibration Resistance	10-55Hz, 1.5mm double amplitude	
Ambient humidity	40-85% RH	
Weight	Approx 4g	
Safety Standard	UL CQC	

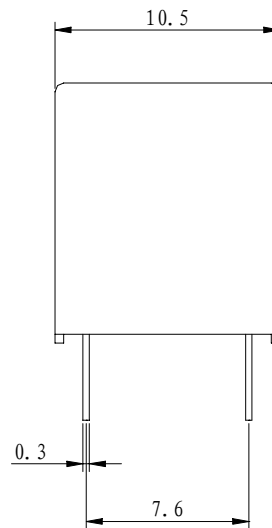
**COIL DATA**

Rated Voltage (VDC)	Coil Resistance $\Omega$ ( $\pm 10\%$ )		Max Operate Voltage (VDC)	Min Release Voltage (VDC)	Max Applied Voltage (VDC)
	0.2W	0.36W			
3	45	25	2.25	0.15	3.9
5	125	70	3.75	0.25	6.5
6	180	100	4.5	0.3	7.8
9	405	225	6.75	0.45	11.7
12	720	400	9	0.6	15.6
24	2800	1600	18	1.2	31.2

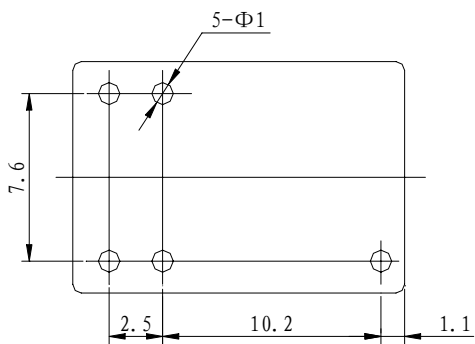
Outline Dimension (mm)



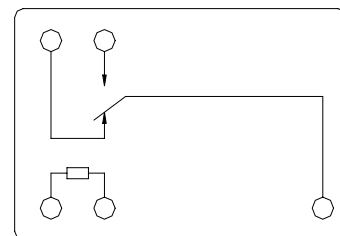
PC Board layout



Wiring Diagram



(Bottom View)



(Bottom View)