

Smoke detectors module GH-312

Feature

- MQ-2 gas sensors detect a wide range of
- SCM program control, reliable operation
- power preheat the automatic detection,
- sensor break detection, safe and reliable
- with LED alarm indicator
- wide voltage range DC 9-20V
- board size 33.5 * 21.5mm
- easy to use, and power supply - signal output

Note: The module can be used to detect: Smoke, LPG, butane, propane

Methane, alcohol, hydrogen

■ electrical parameters

■ Application Circuit

Electrical parameters of GH-312 smoke sensor module

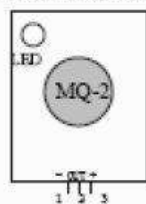
Operating voltage DC voltage 9-20V

Static power consumption less than 0.8W

Output level to 5 V / 0V low

Detection area of 10 square meters:

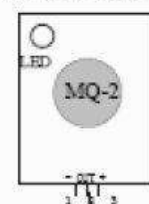
33.5mm*21.5mm



- 1: - Power cathode
- 2: Out signal output
- 3: + Power anode

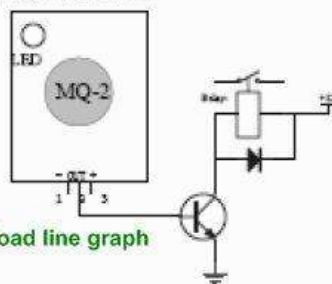
1、Module External Connection

33.5mm*21.5mm



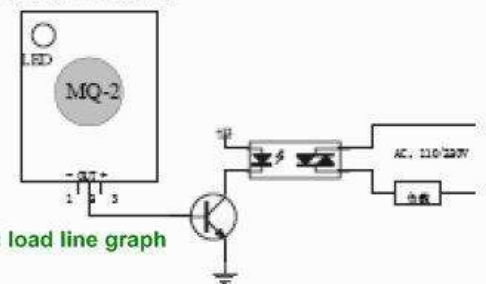
2、Module manipulation chart

33.5mm*21.5mm



3、Dc load line graph

33.5mm*21.5mm



4、Ac load line graph