

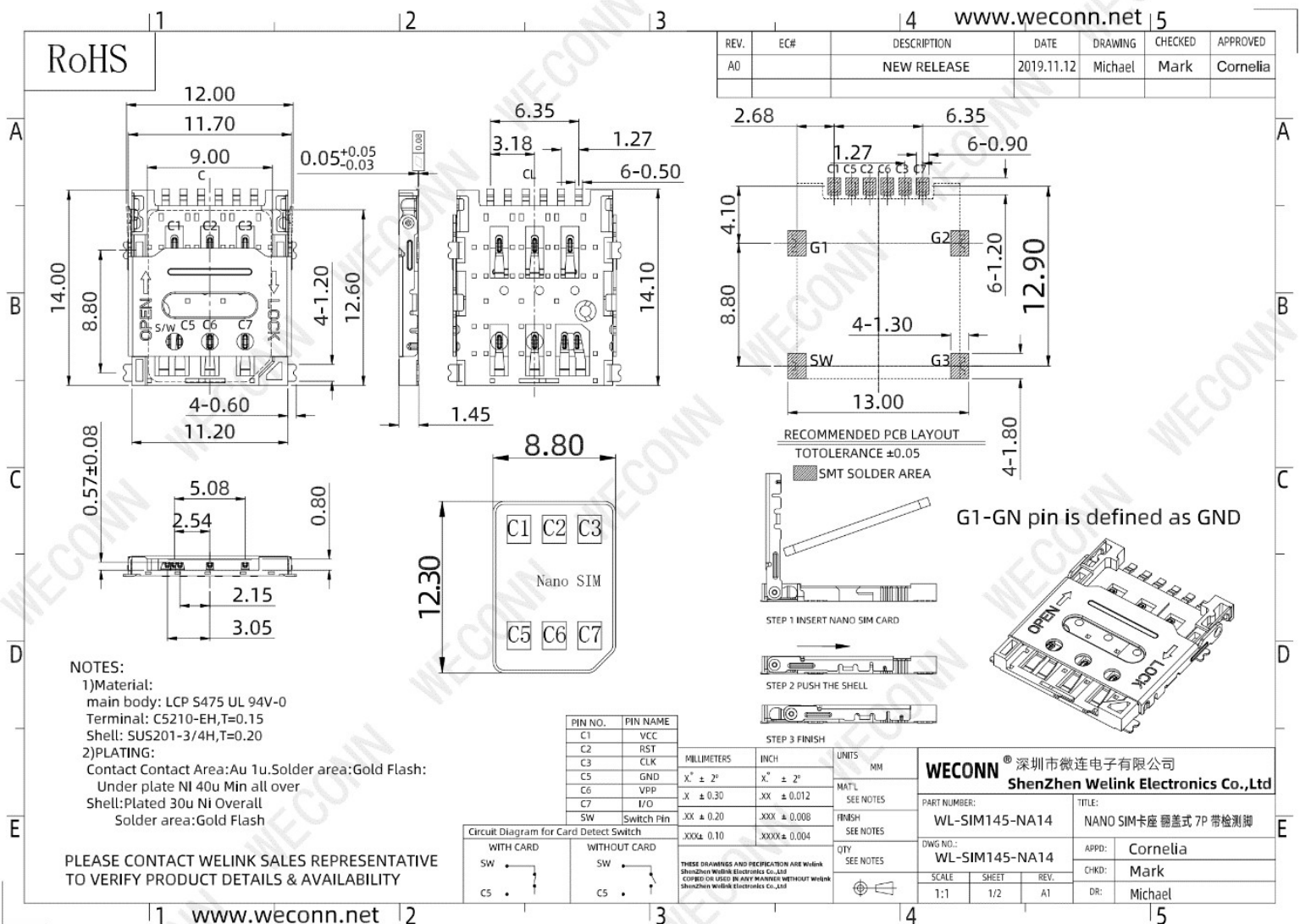
Technical parameters:

1. Rated current: 1.0A AC/DC
2. Rated voltage: 50V AC/DC
3. Operating temperature: -40°C ~ +85°C
4. Storage temperature: -40°C ~ +85°C
5. Contact Impedance: 100m ohms max.
6. Withstand voltage: 500V AC / 1 minute
7. Insulation resistance: 1000M ohms min./500VDC
8. Durability: 1500 times
9. Product temperature resistance: 260±5°C 10S
10. Flatness: 0.10mm MAX.
11. RoHS compliant
12. Stable and superior performance

Product Description:

1. This connector is widely used in mobile phones, tablet PCs, navigators, LCD TVs, automobiles, aviation, smart wearable devices, etc.;
2. Inspection of this product Process is: IQC feed inspection -> into the warehouse -> before the on-line self-test -> IPQC inspection -> FQC final inspection -> OQC out of the cargo inspection
3. This product production process is: on-line inspection -> Cutting filament ribbons-->Assembly shell-->Electrical test-->Flatness test-->Positivity test-->Appearance test-->FQC test-->into storage

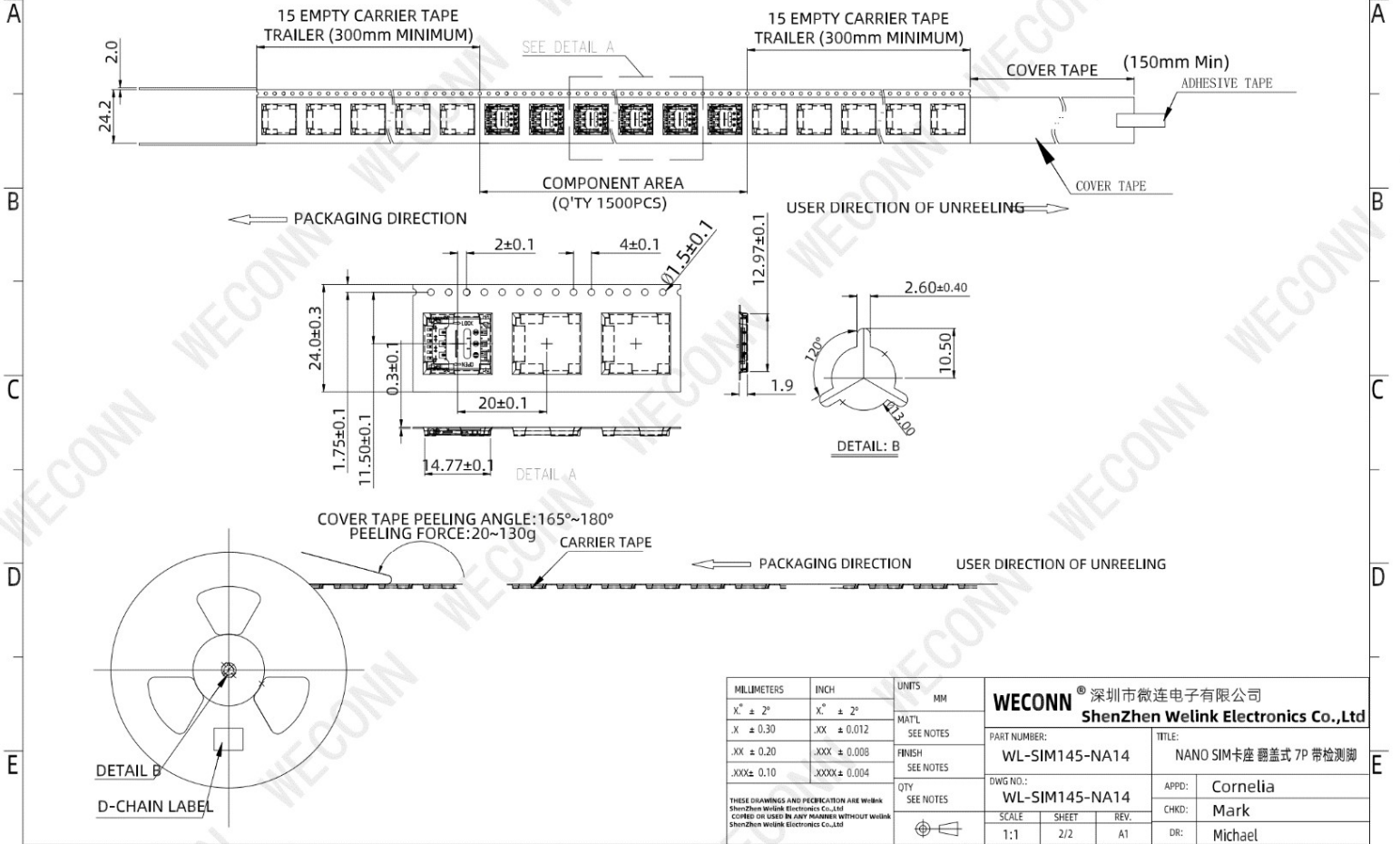
Drawing:



RoHS

www.weconn.net

REV.	EC#	DESCRIPTION	DATE	DRAWING	CHECKED	APPROVED
A0		NEW RELEASE	2019.11.12	Michael	Mark	Cornelia



MILLIMETERS	INCH	UNITS	MM	WECONN® 深圳市微连电子有限公司 ShenZhen Welink Electronics Co.,Ltd	
X° ± 2°	X° ± 2°	MATL	SEE NOTES	PART NUMBER:	TITLE:
.XX ± 0.30	.XX ± 0.012	FINISH	SEE NOTES	WL-SIM145-NA14	NANO SIM卡座 翻盖式 7P 带检测脚
.XX ± 0.20	.XXX ± 0.008	QTY	SEE NOTES	DWG NO.:	APPD: Cornelia
.XXX ± 0.10	.XXXX ± 0.004			WL-SIM145-NA14	CHKD: Mark
THESE DRAWINGS AND SPECIFICATION ARE WELINK SHENZHEN WELINK ELECTRONICS CO.,LTD. COPIED OR USED BY ANY NUMBER WITHOUT WELINK SHENZHEN WELINK ELECTRONICS CO.,LTD.				SCALE	REV.
				1:1	A1
				SHEET	DR:
				2/2	Michael

Link of product:

<http://www.szwelink.com/index.php?m=home&c=View&a=index&aid=61>