

EMI/EMC FILTER

IX SERIES



Features

- Ideally suited for products that must conform to part 15, FCC regulations
- Metal cased miniature type with high performance
- Meet over voltage category II of IEC 60664 and comply with IEC 60950
- Uses IEC connector that meets the safety standards from certification bodies
- Soldering Lug, Faston Tab, PCB mounting type are available
- Short length and under tab for small space
- Excellent filtering characteristics for high frequencies
- Earth coil provided

Applications

- Digital equipments
- Personal computers and peripherals
- Measuring instruments
- For use in miniature equipments
- For monitors and display units

Specifications

MODEL	Rated Voltage (AC, DC)	Rated Current	Leakage Current (250V AC)	Operating Temperature
IX-(N)01**-*	250V	1A	-	-25°C to +85°C Including temperature rise Derating Curve
IX-(N)02**-*	250V	2A	-	
IX-(N/L)03**-*	250V	3A	-	
IX-(N)06**-*	250V	6A	-	
IX-(N)**0-*	-	-	0.01mA max.	
IX-(N)**C-*	-	-	0.075mA max.	
IX-(N)**D-*	-	-	0.10mA max.	
IX-(N)**2-*	-	-	0.35mA max.	
IX-(N)**3-*	-	-	0.50mA max.	

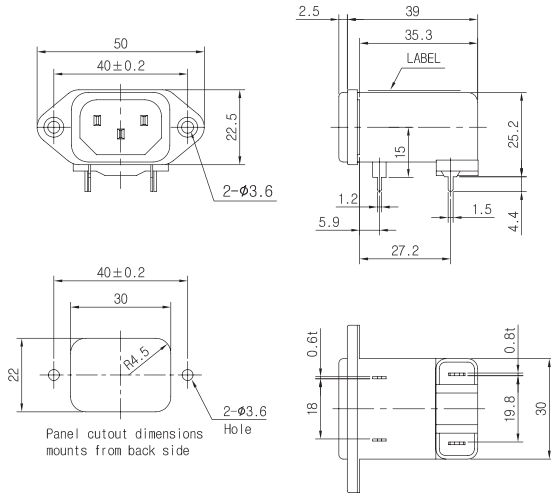
Note
 Test Voltage : 1500V AC one minute, line to earth
 Insulation Resistance : 300 Mohm min. at 500V DC
 Voltage Drop : 1V max. at rated current
 Weight : 50g
 Inlet : Compatible with IEC-60320

Model Number Construction

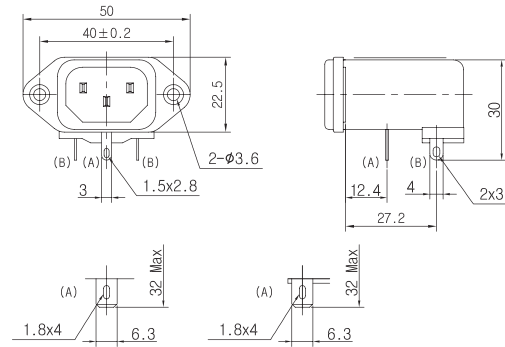
I	X	03	4	2	S
Input Connector I : IEC Connector	Special Design D : Screw and PCB mounting/Metal Case (With ground choke)	Current Rating : AC rms 01,N01 : 1amp 02,N02 : 2amp 03,N03,L03 : 3amp 06,N06 : 6amp ("L", "N" high performance)	Line-Line Cap.Value 2 : 0.022 μ F 4 : 0.047 μ F A : 0.1 μ F B : 0.15 μ F	Line-Gnd Cap.Value 2 : 2200 pF 3 : 3300 pF C : 330 pF D : 470 pF 0 : None	Output Terminal P : PCB Pin S : Solder Lug H : Faston Tab #250

Shapes and Dimensions

PCB mounting Type

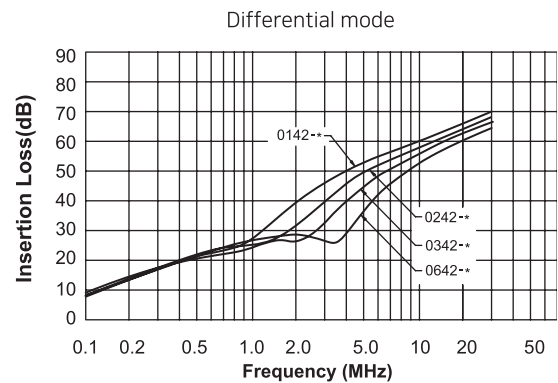
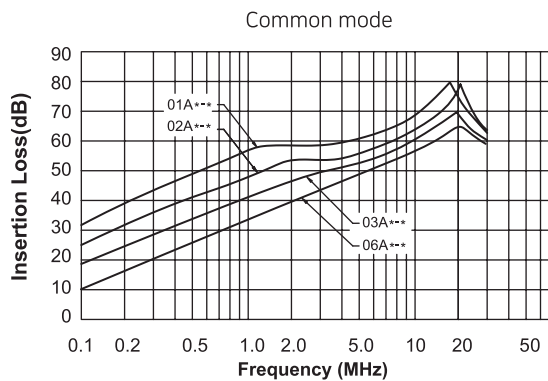
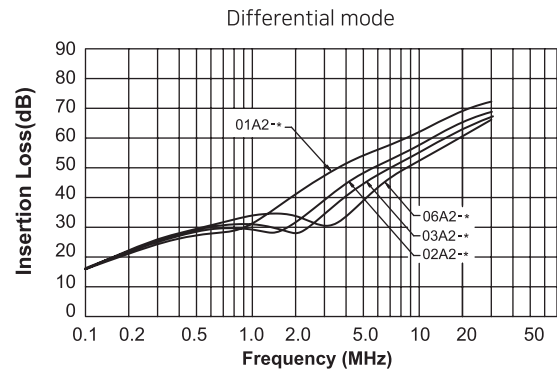
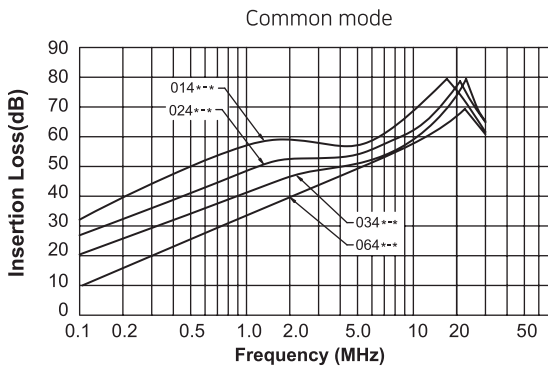


Soldering Lug type

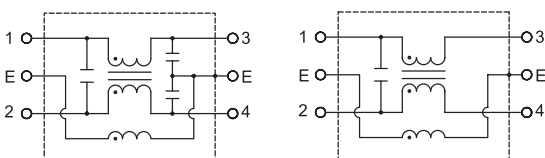


* Unit : mm
* General tolerance : ±0.5

Attenuation Characteristics



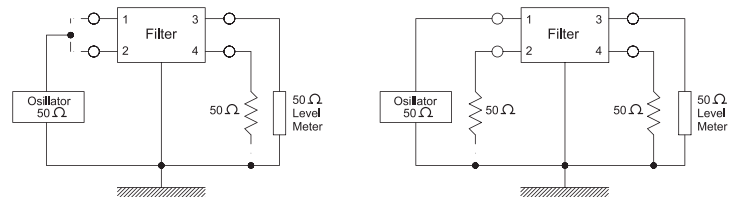
Circuit Diagram



IX-***-* type

IX-***0-* type

Measurement Configuration



Common mode

Differential mode